



STEELHEAD  
MARINE

Raising The Bar On  
Yacht Crane Performance

# WD Series 800/1000



Commercial / Recreational series. Built on the ES Series design, with the ability to option certain functionality and features to accommodate the needs for a quality crane when budget is a prime consideration. Offers the same specifications of the ES Series but without some of the options to make this a more economical choice when aesthetics is not the top priority. Ideal for a commercial vessel

## Application

Recreational, Light Commercial

## Standard Features

- 355° Power Rotation
- Smooth quiet operation
- Linear Winch
- Easy Installation
- Composite Rope (not steel cable)
- Proof Tested to 110% of Capacity
- Yacht Quality Paint Finish
- 12 or 24 Volt DC Power Unit
- Standpipe Assembly
- Power Luffing

## Optional Features

- Wireless control
- Pedestal Base Mount
- Custom specifications available upon request



[www.SteelheadMarine.net](http://www.SteelheadMarine.net)

Email: [info@SteelheadMarine.net](mailto:info@SteelheadMarine.net) • 604.424.8313 • Toll Free 1.800.77.0455  
Unit 1 - 5367 271 Street Langley • BC • V4W 3V7 • CANADA



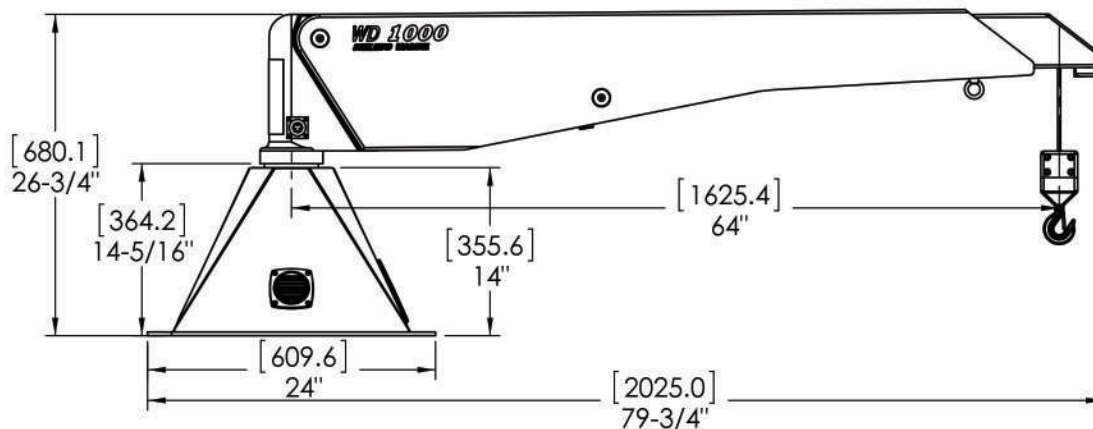
# WD Series 800/1000

## WD 800

Capacity	Reach	Weight	Hoist Cable	Cable Safety Factor	Hoist Travel	Winch Type	Four Function Hydraulics
800 lbs 364 kg	8' 244 m	215 lbs 98 kg	1/4" Amsteel	10:1	17' 518 cm	Linear	Luffing Winch

## WD 1000

Capacity	Reach	Weight	Hoist Cable	Cable Safety Factor	Hoist Travel	Winch Type	Four Function Hydraulics
1000 lbs 455 kg	8' 244 m	215 lbs 98 kg	1/4" Amsteel	8:1	17' 518 cm	Linear	Luffing Winch





STEELHEAD  
MARINE

Raising The Bar On  
Yacht Crane Performance

# E series 1000 crane



Commercial / Recreational series. Built on the ES Series design, with the ability to option certain functionality and features to accommodate the needs for a quality crane when budget is a prime consideration. Offers the same specifications of the ES Series but without some of the options to make this a more economical choice when aesthetics is not the top priority. Ideal for a commercial vessel

## Application

Recreational, Light Commercial

## Standard Features

- 350° power rotation
- Smooth quiet operation
- Low profile design
- 4 function hydraulics (luffing, boom extension, rotation, winch)
- ALEXSEAL Yacht Coating
- Amsteel Blue™ synthetic rope
- Proof tested to 110% of capacity

## Optional Features

- Wireless control
- 12 or 24 volt DC power units or 230V AC power
- Standpipe or FRP pedestal base mounting
- Color match finish
- Custom specifications available upon request



[www.SteelheadMarine.net](http://www.SteelheadMarine.net)

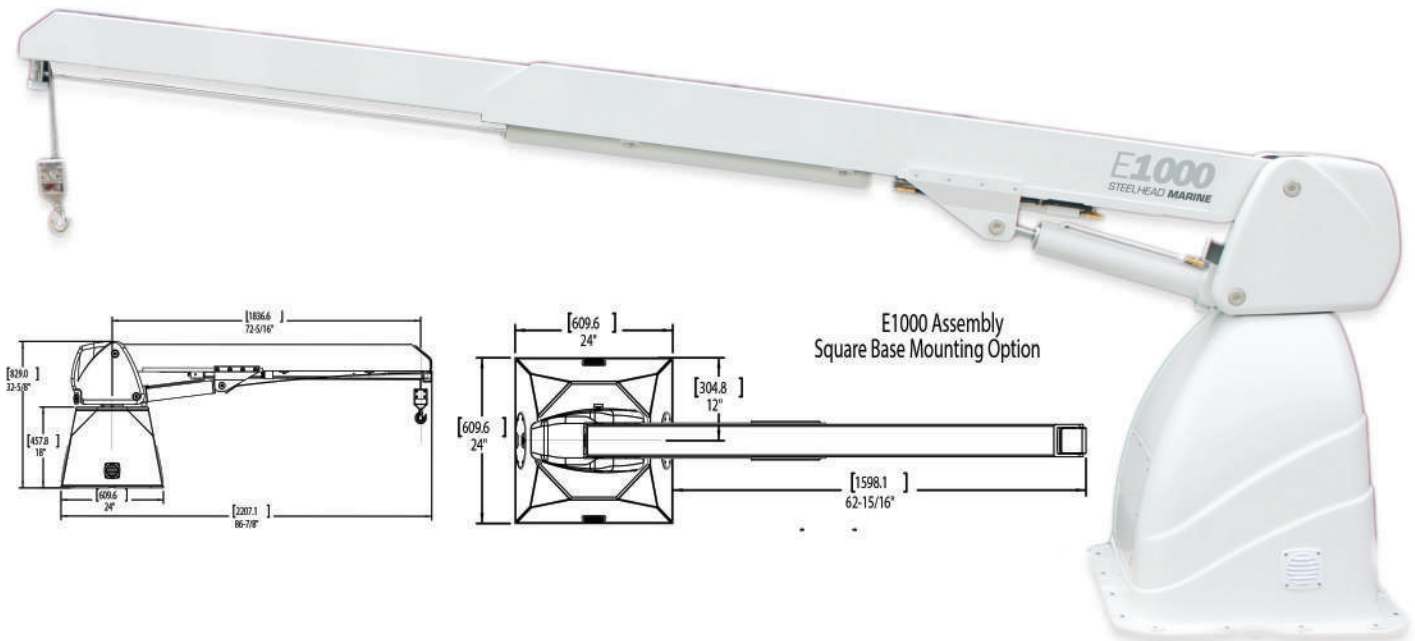
Email: [info@SteelheadMarine.net](mailto:info@SteelheadMarine.net) • 604.424.8313 • Toll Free 1.800.77.0455  
Unit 1 - 5367 271 Street Langley • BC • V4W 3V7 • CANADA



# E series 1000 crane

Model	Maximum Lift	Extended Reach	Hoist Height	Weight	Retracted Length	Idea For Vessels
E1000	1000 Lbs 454 Kg	10 " 3.0 m	16" 4.88 m	348 Lbs 174 Kg	6" 1.83 m	Less 55" 16.8 m

Capacity	Reach	Weight	Hoist Cable	Cable Safety Factor	Hoist Travel	Winch Type	Optional Hydraulics
1000 Lbs 455 Kg	6 - 10 " 1.8 - 3 m	Dependent On Options	5/16" Amsteel	9:1	16' 4.9 m	Less 55" 16.8 m	Extension Rotation





## ES Series 1000



Commercial / Recreational series. Built on the ES Series design, with the ability to option certain functionality and features to accommodate the needs for a quality crane when budget is a prime consideration. Offers the same specifications of the ES Series but without some of the options to make this a more economical choice when aesthetics is not the top priority. Ideal for a commercial vessel

### Application

Recreational, Light Commercial

### Standard Features

- 350° power rotation
- Smooth Quiet Operation
- Linear Winch
- 4 Function Hydraulics (luffing, boom extension, rotation, winch)
- Low Profile Design
- Proof Tested to 110% of Capacity
- ALEXSEAL Yacht Coating
- Amsteel Blue™ Synthetic Rope
- Wireless Control

### Optional Features

- Wireless control
- Pedestal Base Mount
- Custom specifications available upon request

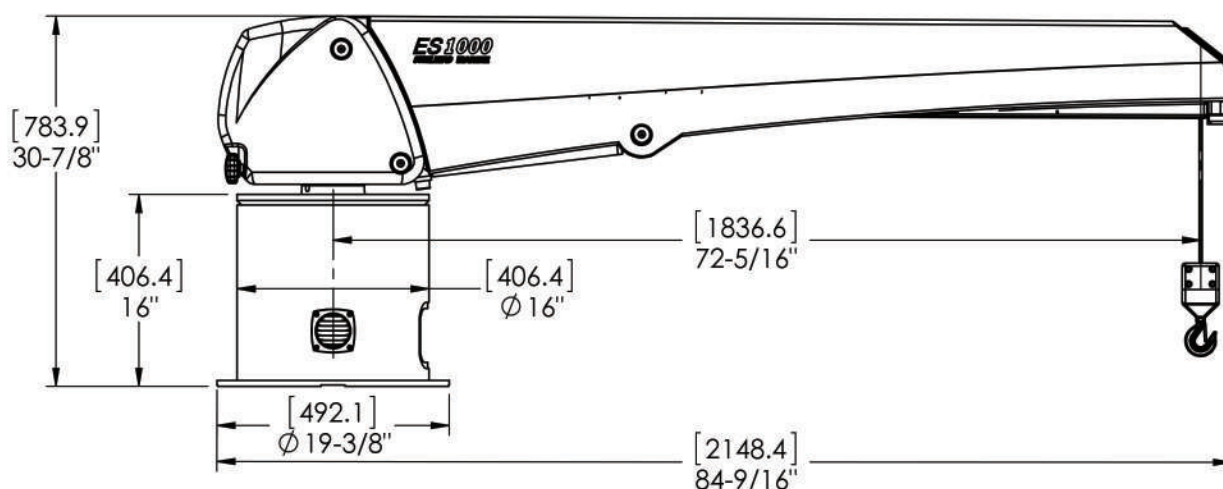




# ES Series 1000

Model	Maximum Lift	Extended Reach	Hoist Height	Weight	Retracted Length	Idea For Vessels
ES1000	1000 Lbs 454 Kg	10 ' 3.0 m	16 ' 4.88 m	384 Lbs 174 Kg	6 ' 183 m	Less 55 ' 16.8 m

Capacity	Reach	Weight	Hoist Cable	Cable Safety Factor	Hoist Travel	Winch Type	Optional Hydraulics
1000 Lbs 455 Kg	6 - 10 ' 1.8 - 3 m	384 lbs 175kg	1/4" Amsteel	9:1	16 ' 4.9 m	Linear	Luffing Extension Rotation Winch





STEELHEAD  
MARINE

Raising The Bar On  
Yacht Crane Performance

# ES Series 1500



Commercial / Recreational series. Built on the ES Series design, with the ability to option certain functionality and features to accommodate the needs for a quality crane when budget is a prime consideration. Offers the same specifications of the ES Series but without some of the options to make this a more economical choice when aesthetics is not the top priority. Ideal for a commercial vessel

## Application

Recreational, Light Commercial

## Standard Features

- Low Profile Design
- Smooth Quiet Operation
- 4 Function Hydraulics (luffing, boom extension, rotation, winch)
- Proof Tested to 110% of Capacity
- ALEXSEAL Yacht Coating
- Amsteel Blue™ Synthetic Rope

## Optional Features

- Wireless control
- 12 or 24 Volt DC Power Units
- Standpipe, Aluminum Round or Square Base
- Color Match Finish
- Custom specifications available upon request



[www.SteelheadMarine.net](http://www.SteelheadMarine.net)

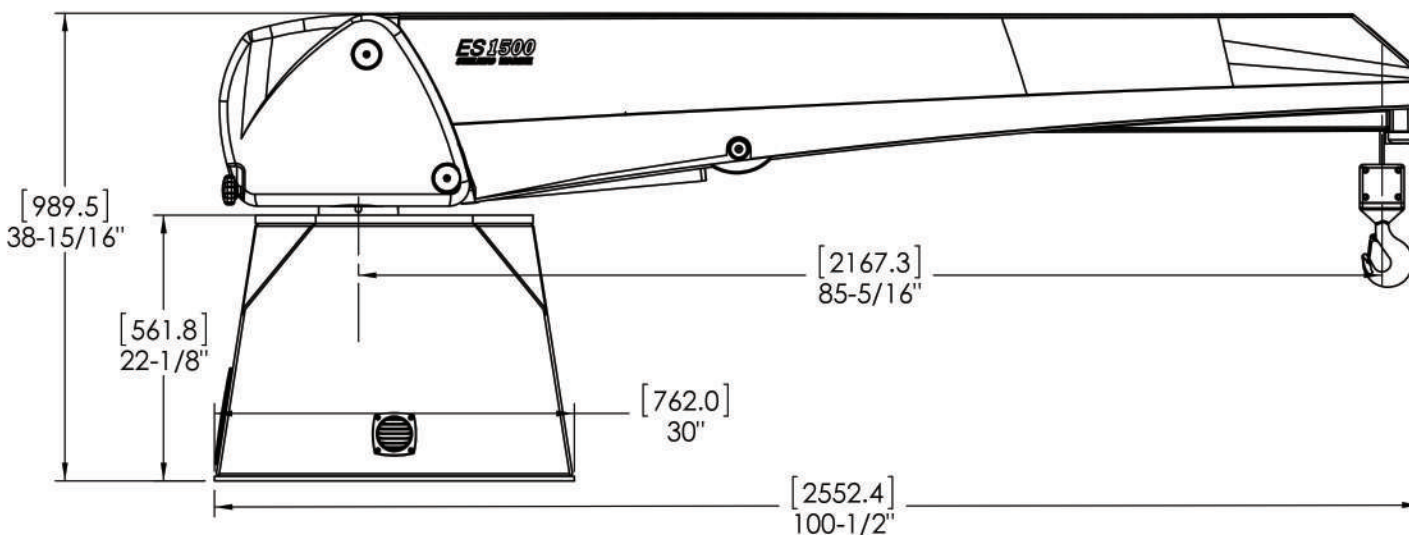
Email: [info@SteelheadMarine.net](mailto:info@SteelheadMarine.net) • 604.424.8313 • Toll Free 1.800.77.0455  
Unit 1 - 5367 271 Street Langley • BC • V4W 3V7 • CANADA



# ES Series 1500

Model	Maximum Lift	Extended Reach	Hoist Height	Weight	Retracted Length	Idea For Vessels
ES1500	1500 Lbs 680 Kg	12 ' 3.7 m	20 ' 6.0 m	202 Lbs 273 Kg	7 ' 2.13 m	55 ' to 70 ' 16.8m to 21.3m

Capacity	Reach	Weight	Hoist Cable	Cable Safety Factor	Hoist Travel	Winch Type	Optional Hydraulics
1500 Lbs 682 Kg	7 - 12 ' 2.1 - 3.7 m	602 Lbs 273 Kg	5/16 " Amsteel	9:1	20 ' 6 m	Linear	Luffing Extension Rotation Winch





## ES Series 1750



Commercial / Recreational series. Built on the ES Series design, with the ability to option certain functionality and features to accommodate the needs for a quality crane when budget is a prime consideration. Offers the same specifications of the ES Series but without some of the options to make this a more economical choice when aesthetics is not the top priority. Ideal for a commercial vessel

### Application

Recreational, Light Commercial

### Standard Features

- Low Profile Design
- Smooth Quiet Operation
- 4 Function Hydraulics (luffing, boom extension, rotation, winch)
- Proof Tested to 110% of Capacity
- ALEXSEAL Yacht Coating
- Amsteel Blue™ Synthetic Rope

### Optional Features

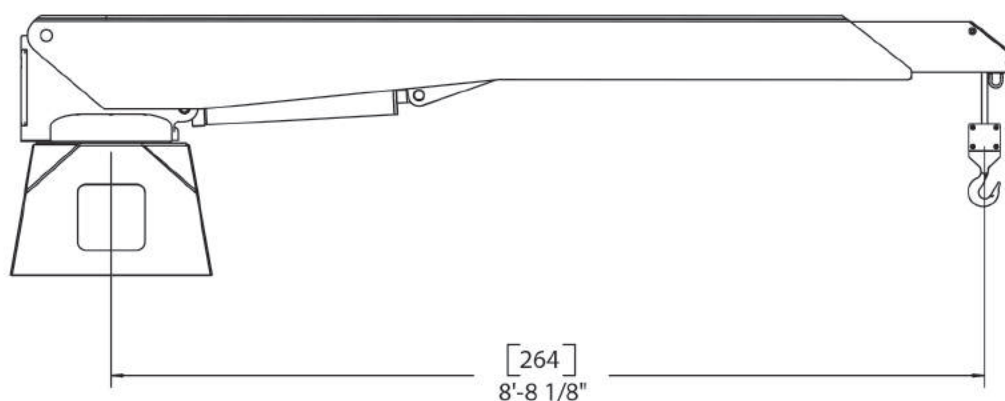
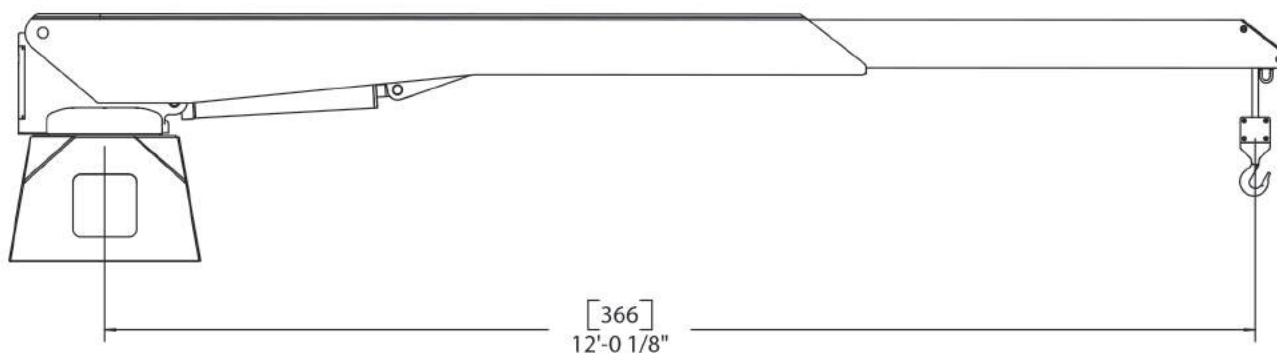
- Wireless control
- 12 or 24 Volt DC Power Units
- Standpipe, Aluminum Round or Square Base
- Color Match Finish
- Custom specifications available upon request



## ES Series 1750

Model	Maximum Lift	Extended Reach	Hoist Height	Weight	Retracted Length	Idea For Vessels
ES1750	1750 Lbs 794 Kg	12 ' 3.7 m	20 ' 6.0 m	650 Lbs 295 Kg	7 ' 2.13 m	70 ' Plus 21.3m Plus

Capacity	Reach	Weight	Hoist Cable	Cable Safety Factor	Hoist Travel	Winch Type	Optional Hydraulics
1750 Lbs 794 Kg	12 ' 3.6m	630 Lbs 285 Kg	5/16 " Amsteel	9:1	20 ' 6 m	Linear	Luffing Extension Rotation Winch





STEELHEAD  
MARINE

Raising The Bar On  
Yacht Crane Performance

# CT Series 2000/2500



Commercial / Recreational series. Built on the ES Series design, with the ability to option certain functionality and features to accommodate the needs for a quality crane when budget is a prime consideration. Offers the same specifications of the ES Series but without some of the options to make this a more economical choice when aesthetics is not the top priority. Ideal for a commercial vessel

## Application

Recreational, Light Commercial

## Standard Features

- Infinite 360° Power Rotation
- Low Profile Design
- Smooth Quiet Operation
- Power Extending 6061 Aluminum Boom with Internal Linear Winch
- ALEXSEAL Yacht Coating
- Amsteel Blue™ Synthetic Rope
- Proof Tested to 110% of Capacity
- Proportional Controls

## Optional Features

- Wireless control
- 12V, 24V, 230V Power Units Available
- Standpipe or Pedestal Base Mounting
- Custom Reaches Available
- Custom specifications available upon request



[www.SteelheadMarine.net](http://www.SteelheadMarine.net)

Email: [info@SteelheadMarine.net](mailto:info@SteelheadMarine.net) • 604.424.8313 • Toll Free 1.800.77.0455  
Unit 1 - 5367 271 Street Langley • BC • V4W 3V7 • CANADA



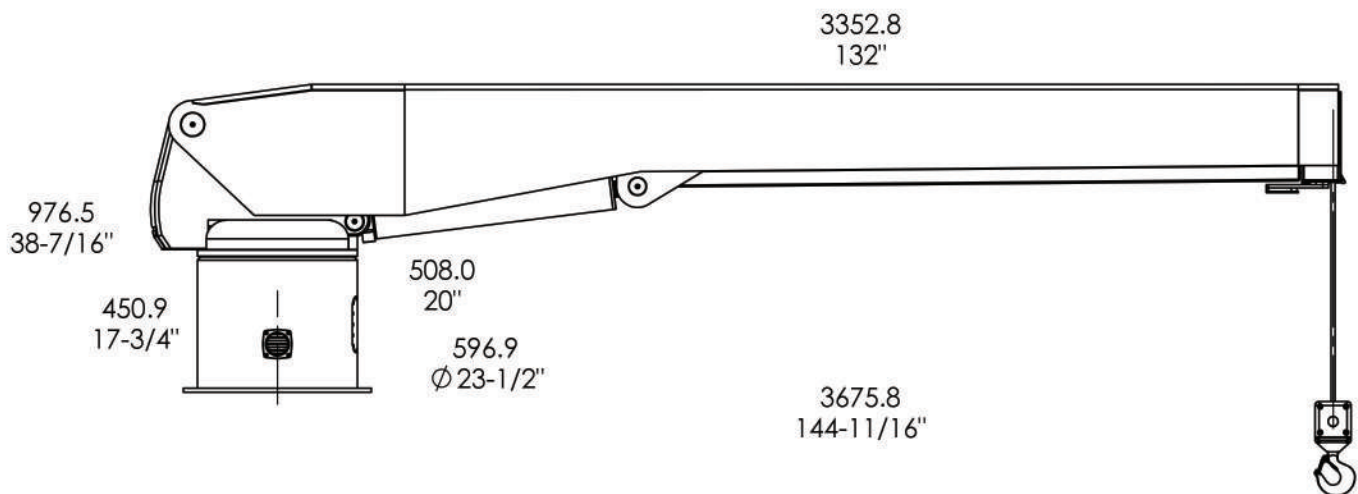
# CT Series 2000/2500

## CT 2000

Max Lift	Extended Reach	Weight	Hoist Cable	Cable Safety Factor	Hoist Travel	Winch Type	Ideal For Vessels
2000 lbs 909 kg	12 - 18' 3.7 - 5.5m	1050 lbs 470 kg	3/8" Amsteel	10:1	24' 732 cm	Linear	70' plus 21 m

## CT 2500

Capacity	Reach	Weight	Hoist Cable	Cable Safety Factor	Hoist Travel	Winch Type	Ideal For Vessels
2500 lbs 1136 kg	12 - 18' 3.7 - 5.5m	1150 lbs 522 kg	1/2" Amsteel	13:1	24' 732 cm	Linear	70' plus 21 m







STEELHEAD  
MARINE

Raising The Bar On  
Yacht Crane Performance

# CT Series 3000/3500



Commercial / Recreational series. Built on the ES Series design, with the ability to option certain functionality and features to accommodate the needs for a quality crane when budget is a prime consideration. Offers the same specifications of the ES Series but without some of the options to make this a more economical choice when aesthetics is not the top priority. Ideal for a commercial vessel

## Application

Recreational, Light Commercial

## Standard Features

- Infinite 360° Power Rotation
- Low Profile Design
- Smooth Quiet Operation
- Power Extending 6061 Aluminum Boom with Internal Linear Winch
- ALEXSEAL Yacht Coating
- Amsteel Blue™ Synthetic Rope
- Proof Tested to 110% of Capacity
- Proportional Controls

## Optional Features

- Wireless control
- 12V, 24V, 230V Power Units Available
- Standpipe or Pedestal Base Mounting
- Custom Reaches Available
- SOLAS/MED Certifications Available (3500 only)



[www.SteelheadMarine.net](http://www.SteelheadMarine.net)

Email: [info@SteelheadMarine.net](mailto:info@SteelheadMarine.net) • 604.424.8313 • Toll Free 1.800.77.0455  
Unit 1 - 5367 271 Street Langley • BC • V4W 3V7 • CANADA



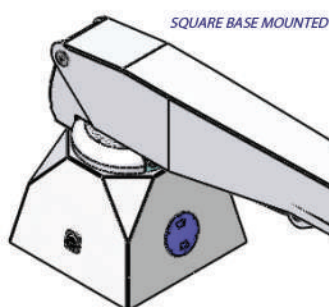
# CT Series 3000/3500

## CT 3000

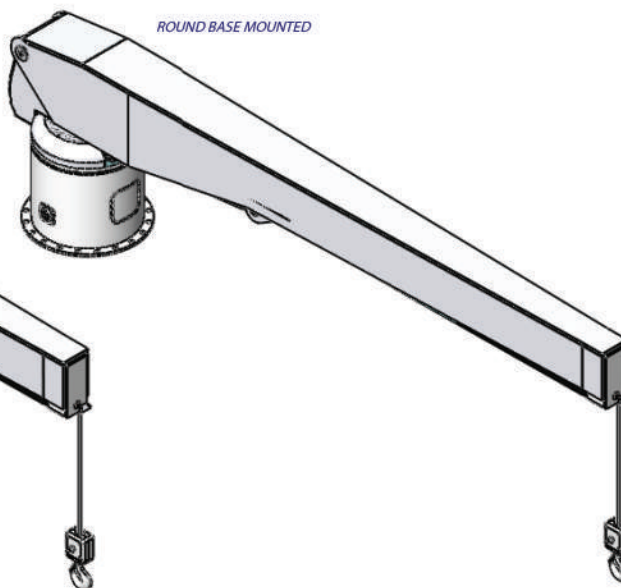
Max Lift	Extended Reach	Weight	Hoist Cable	Cable Safety Factor	Hoist Travel	Winch Type	Ideal For Vessels
3000 lbs 1364 kg	11 - 16' 3.4 - 4.9m	1150 lbs 522 kg	1/2" Amsteel	10.8:1	24' 7.3 m	Linear	70' plus 21 m

## CT 3500

Capacity	Reach	Weight	Hoist Cable	Cable Safety Factor	Hoist Travel	Winch Type	Ideal For Vessels
3500 lbs 1587 kg	13 - 20' 4 - 6.1 m	1700 lbs 771 kg	1/2" Amsteel	9.3:1	24' 7.3 m	Linear	70' plus 21 m



SQUARE BASE MOUNTED



ROUND BASE MOUNTED



STEELHEAD  
MARINE

Raising The Bar On  
Yacht Crane Performance

# CT Series 4000/4500/5000



Commercial / Recreational series. Built on the ES Series design, with the ability to option certain functionality and features to accommodate the needs for a quality crane when budget is a prime consideration. Offers the same specifications of the ES Series but without some of the options to make this a more economical choice when aesthetics is not the top priority. Ideal for a commercial vessel

## Application

Recreational, Light Commercial

## Standard Features

- Infinite 360° Power Rotation
- Low Profile Design
- Smooth Quiet Operation
- Power Extending 6061 Aluminum Boom with Internal Linear Winch
- ALEXSEAL Yacht Coating
- Amsteel Blue™ Synthetic Rope
- Proof Tested to 110% of Capacity
- Proportional Controls

## Optional Features

- Wireless control
- 230V 60Hz AC, 208-440V 3PH 50/60 Hz AC and 24V DC Hydraulic Power Units Available
- Standpipe or Pedestal Base Mounting
- Custom Specifications Available Upon Request



[www.SteelheadMarine.net](http://www.SteelheadMarine.net)

Email: [info@SteelheadMarine.net](mailto:info@SteelheadMarine.net) • 604.424.8313 • Toll Free 1.800.77.0455  
Unit 1 - 5367 271 Street Langley • BC • V4W 3V7 • CANADA



# CT Series 4000/4500/5000

## CT 4000

Max Lift	Extended Reach	Weight	Hoist Cable	Cable Safety Factor	Hoist Travel	Winch Type	Ideal For Vessels
4000 lbs 1818 kg	13 - 20' 4 - 6.1m	2075 lbs 943 kg	5/8" Amsteel	13:1	30' 7.6 m	Linear	70' plus 21 m

## CT 4500

Capacity	Reach	Weight	Hoist Cable	Cable Safety Factor	Hoist Travel	Winch Type	Ideal For Vessels
4500 lbs 2045 kg	13 - 20' 4 - 6.1 m	2100 lbs 953 kg	5/8" Amsteel	12:1	30' 7.6 m	Linear	70' plus 21 m

## CT 5000

Capacity	Reach	Weight	Hoist Cable	Cable Safety Factor	Hoist Travel	Winch Type	Ideal For Vessels
5000 lbs 2273 kg	13 - 20' 4 - 6.1 m	2400 lbs 1089 kg	5/8" Amsteel	10.5:1	30' 7.6 m	Linear	70' plus 21 m



## CT Series 6000



Commercial / Recreational series. Built on the ES Series design, with the ability to option certain functionality and features to accommodate the needs for a quality crane when budget is a prime consideration. Offers the same specifications of the ES Series but without some of the options to make this a more economical choice when aesthetics is not the top priority. Ideal for a commercial vessel

### Application

Recreational, Light Commercial

### Standard Features

- Infinite 360° Power Rotation
- Low Profile Design
- Smooth Quiet Operation
- Power Extending 6061 Aluminum Boom with Internal Linear Winch
- ALEXSEAL Yacht Coating
- Amsteel Blue™ Synthetic Rope
- Proof Tested to 110% of Capacity
- 250,000 ft-lb Max Capacity

### Optional Features

- Wireless control
- 230V 60Hz AC, 208-440V 3PH 50/60 Hz AC and 24V DC Hydraulic Power Units Available
- Standpipe or Pedestal Base Mounting
- Custom Specifications Available Upon Request





# CT Series 6000

## CT 6000

Max Lift	Extended Reach	Weight	Hoist Cable	Cable Safety Factor	Hoist Travel	Winch Type	Ideal For Vessels
6000 lbs 2722 kg	12.5 - 20' 3.8 - 6.1m	2600 lbs 1179 kg	5/8" Amsteel	9:1	30' 9.1 m	Linear	70' plus 21 m

